

## Events of Interest:

- **March 2 Book Club, 7 p.m. Barnes & Noble, MG**
- **March 15 WOT General Membership Meeting, 7 p.m. MG Community Center**
- **March 20 Spring Fling Craft Fair, Maple Grove Community Center**
- **March 25 Empty Bowls, Osseo Sr. High School**

## Inside this issue:

Scrapbooking for a Cause	2
Future Directions Survey	2
CROSS Fund-raiser: All Shook Up	2
CROSS Fund-raisers: Empty Bowls	2
MN Women of Today 60 Year History	3-4

# Maple Grove Women of Today

Volume 2, Issue 7

February 2010

## Women of Today Winter State Meeting Highlights

The highlight for our chapter at Winter State Convention was Angie Frassel's Women Who Impact Award she received at the Saturday night banquet. Clair Stangle, Sue Jammes, Wendy Tindall, and Bonnie Marten also attended the reception held before the banquet for Angie and the Outstanding Young Adults and Individuals with Developmental Challenges Award winners.

Wendy Tindall received a certificate for the Living and Learning Program.

153 new members joined the Women of Today in the 2<sup>nd</sup> Trimester and retention is at 73% for current members. New chapters are being started in Owatonna and Egan, and Breckenridge.

Certifications this trimester included 43 for Living and Learning, 4 PEP courses, 25 Effective Writing and 23 Effective Speaking.

In the Success System, Maple Grove Women of Today was 25<sup>th</sup>. New Hope was 10<sup>th</sup>. Otsego was 9<sup>th</sup>, Brooklyn Park 4<sup>th</sup>, Champlin 3<sup>rd</sup> and Eden Prairie was the number one chapter.

New Hope won the outstanding chapter brochure contest and St. Michael/Albertville won the chapter banner contest.

The Women of Today foundation provides grants to chapters and Aitkin was awarded \$500 for a city park bench restoration project and Columbia Heights received a \$1000 matching grant for their library.

Angie Frassel received a presidential pin and the nominator wrote, "This member coordinated a huge chapter project with professionalism and thoroughness. The chapter craft show coordinator puts in a huge number of hours and has to juggle a number of duties at once. And that member handled the details with grace and style. Maple Grove is so thankful for the hard work of Angie Frassel."

This trimester state-wide the organization earned

\$32,629 for Community Connections with 3,052 service hours,  
Women's Wellness \$335

Hearing and Service Dogs of MN \$1170 with 135 service hours

Youth of Today \$11956 and 1124 service hours

31 chapters submitted 135 transmittal forms during the 2<sup>nd</sup> trimester, totaling over **\$48,347** in donations for the 2<sup>nd</sup> trimester.

The Minnesota Women of Today were applied and were chosen to receive proceeds from the pond at the Mall of America in October. They collected \$1660.

Chapters brought their items collected for the Shriner's hospital. The items filled three hotel luggage carts and the Shriner's who attended the convention to receive the items were elated. The Twin Cities hospital is one of 22 around the country who serve over 900,000 children each year.

Our district, District 11, will be hosting the Fall State Convention on September 24-26 at Grand Rios Resort in Brooklyn Park. Many hands will be needed to make this a success. Volunteer opportunities will be available soon, and this is a professional development opportunity in planning and execution of a large event.

The luncheon speaker, Sue Dionne, United States WOT President listed the following traits needed to assist in reaching our goals:

Keep your cool                      Stay Focused                      Mental Toughness                      Positive Attitude  
Sense of Humor                      Optimistic Outlook

Obstacles are those things we see when we take our eyes off of the goal – Henry Ford





Future Directions is a committee that helps shape the future of our organization.



## Scrapbooking for a Cause

For more information about these events, contact Sue at [sjammes50@comcast.net](mailto:sjammes50@comcast.net)

- Page for a Cure is scheduled for Saturday April 17 in Maplewood from 9 a.m. – 9 p.m. Cost is \$60
- Brooklyn Park Women of Today are hosting a scrapbook fundraiser on March 19-20 at Grace Fellowship Church. Proceeds will be donated to the local food shelf, CEAP, and the American Heart Association. Cost is \$40

## Future Directions Survey

Results from the Future Directions Survey were distributed and is also available online at [mnwt.org](http://mnwt.org). Leadership training was noted as the most valued example of what our organization offers members second only to friendships. The Future Directions committee is evaluating future training opportunities, and encourages members to contact any Future Directions member with ideas and requests. The Web site received the most suggestions for needing change, and a new Web site will be completed soon.

### **Please give 4 specific examples of what you value as a member of our organization:**

Friendships, the social part/fellowship, meeting new people  
Community service, doing good for others, service through projects, fundraising for worthy causes  
Leadership training/opportunities, training provided for each position, personal enrichment, and personal growth

Conventions, events, meetings, project fair, Friday night party

### **Please give specific examples of what you would like to see changes in our organization:**

More advertised formal training for members—also good PR and great service opportunity to communities Web site, Update Web site, make Web site more user-friendly, simpler Web site  
Lower prices, membership price, less paperwork, “Go Green,” more opportunities for paperwork online; get rid of file cabinets (staff and state program managers) and go paperless with back up discs, easier ways to delegate that decreases paperwork, simplify chapter level reporting, some way to simplify the amount of reporting

## Support CROSS Food Shelf

### **All Shook Up for CROSS Food Shelf**

Cross Community Players present **All Shook Up**; the story's all new, the music's all Elvis. **All Shook Up** is a burnin' musical comedy that uses the legendary music of Elvis to tell the story of a small town girl who dreams of hitting the open road, and the mysterious guitar-playing stranger who brings romance, rebellion and rock 'n' roll into her life.

Performances: February 28, 2 p.m.

March 5 & 6 – 7:30 p.m., March 7, 2 p.m.

Cross Winds United Methodist Church, Maple Grove

Ticket information: [crossplayers.org](http://crossplayers.org) or 763 391-2787. Tickets also available at the door.

### **5<sup>th</sup> Annual Empty Bowls**

A fund raising event to support the CROSS Food Shelf

Thursday March 25

3 – 7 p.m.

Osseo Senior High Cafeteria

#### **What is Empty Bowls?**

Share a basic meal of soup and bread (donated by Boston's Gourmet Pizza) and take home a handmade bowl in return for making a donation to CROSS food shelf. 100% of the donations will go directly to the food shelf. Keep your bowl and display it to serve as a reminder of the hungry in our community who go home to empty bowls each day.

Enjoy musical entertainment provided by students who attend schools throughout the Osseo Area School District.

## Mrs. Jaycees/Jaycee Women/Women of Today Celebrating 60 years of Service

At the state convention luncheon we watched a presentation about the 60 year history of the Women of Today by the decade.

### 1950s

In 1950, representatives of eight Mrs. Jaycee chapters met to discuss formation of a state organization. The Jaycee state president urged the organization of the Mrs. Jaycees and the new organization was formed with dues of 25 cents per year (raised to \$1 in 1958). At the June national convention, our first president Lois Christensen announced Minnesota as the ninth state to organize. Our creed was written by the Virginia chapter. A cooking school was part of the state convention. There were 12 state committees, and the State wide project was Toys and Joys collection for state hospitals. By 1960 there were 85 chapters and 2000 members.

### 1960s

The first Plan of Action was produced. In 1963 the Newslet used color print and added photos. The Central Mailing System (now known as the Chapter mailing) was implemented. State chaplain and Chairman of the Board were added to state staff. Forms providing education to members were added to conventions. Minnesota Association for Retarded Children purchased a camp near Annandale (Camp Friendship) and Minnesota made a substantial contribution toward its purchase. And through the Flame of Hope Project, a boathouse would eventually be built for Camp Friendship. By the end of this decade, membership was at 2919 with 19 regions and 147 chapters. Spokette-Sparkette was adopted (we now know this as Step I, II, and III membership retention program). Service projects were developed and \$5370 in contributions was reported (1965) Dues were increased to \$1.50 per year (1962).

### 1970s

Membership was open to all women ages 18-36 whether or not you were married to a Jaycee, and in 1977, the name of the organization was changed to Jaycee Women. If outside the age of 36, you were an associate member. The Camp Friendship boathouse was finished. Hubert H. Humphrey attended the dedication. The tradition of presenting the state president with a quilt began. And the Key Women Award began in 1976. The tradition of having uniforms for Executive Council began in 19973. \$55,000 was raised for the ARC area (1974). The Today's Woman programming area was added, and the US Jayceettes organization was established. Cystic Fibrosis and Kidney Disease programming were combined. The first Cystic Fibrosis Bowl-a-thon raised \$151,000. The concept of a two-year priority project began with SIDS as the first priority project, and Alcohol Abuse the second. A no-smoking resolution during state business meetings was passed in 1975. In 1978, we were the number one state in the nation with 1744 new members and over 40 new extensions that year, bringing us to 5000 members.

### 1980s

The Chapter Service Center was opened in 1980 with a paid Executive Secretary. Fundraising reached a reported \$325,000 that year. (\$100,000 donated to Cystic Fibrosis in 1983.) Area meetings were established and Presidential medallions were first presented. In 1981, the first External VP and Internal VP was established. The first regional directors (8) were elected. The Parade of Chapters (now Success System) was established, and top chapters paraded at convention. The Outstanding Young Women Award was added. The Extension Director position was added.

In 1984, the US Jaycees through a court decision must accept women members. Jaycee Women was faced with a decision to merge with the Jaycees or to form our own organization. Many Jaycee Women chapters folded. Reorganization was the choice and the Women of Today organization was born. Many programming name changes occurred, and March of Dimes joined us as a permanent program (1985). Children's Miracle Network was added to our programming area (1986). Regions and Regional directors were eliminated and major restructuring occurred (1989). Fundraising reached \$200,000 in 1988 with \$150,000 for the March of Dimes. Dues were increased from \$15 to \$20 in 1988.

### 1990s

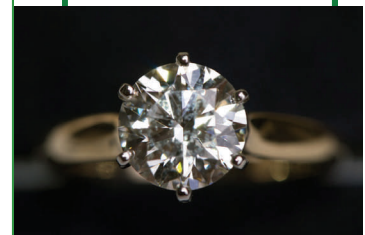
Eleven extensions were completed and we ended 1990 with 2539 members. In 1993, Women of Today expanded marketing by manning a state fair booth and beginning a new standing marketing team committee. A state-wide public relations project called "Tucked in with Care" collected bedding (Continued page 4)



"One faces the future with where they have been."

As Women of Today we are dedicated, faithful, creative, and persevering and ready for our next 60 years!

Happy  
60th  
Anniversary



# MAPLE GROVE WOMEN OF TODAY CHAPTER

[www.maplegrovet.org](http://www.maplegrovet.org)

Maple Grove Women of Today  
P.O. Box 1482  
Maple Grove, MN 55311  
E-mail:  
[membership@maplegrovet.org](mailto:membership@maplegrovet.org)



## About Us

The Maple Grove Women of Today is part of [District 11](#), the [Minnesota Women of Today](#), and the [United States Women of Today](#). We hope you enjoy learning more about our organization through our Web site. We meet the third Monday of every month (except December) at the Maple Grove Community Center.

The Maple Grove Women of Today is a dynamic and diverse women's organization interested in the betterment of our community. We are not politically or religiously affiliated. We are women from various backgrounds, communities, and life experiences. We are working women, homemakers, mothers, grandmothers, married and single women. We are women who want to make our communities a better place for all to live. We volunteer our time, raise funds for charities, and provide informational seminars that are open to the public. Our members choose the projects they want to participate in, given their interest and time availability. Members can be as involved as they want to be. Most group events take place in the evenings or on weekends. We are also interested in bettering ourselves and having fun. We have speakers attend our meetings, challenge ourselves to improve our communication skills, gather to develop new talents and plan social events. The wide range of opportunities that Women of Today offers is one of the elements that make it unique. There is something for every woman and new ideas are always welcome.

We welcome you to attend a meeting and join our organization.

## 60 Years (continued)

### 1990s

valued at over \$14,000 for Mary's Place and generated PR with KS95 and WCCO-TV. In 1995 the first Outstanding Person with Developmental Challenges award was given at Annual convention. In 1997 the first Business Expo was held at Summer Awards. Juvenile Diabetes Foundation was accepted as the priority project. The MWOT Web site was developed (1998). In that same year and the first time in the 14 year history as Women of Today, the organization grew all four quarters and ended the year with 126 chapters and 2393 members.

### 2000s

The focus was on a 5 year Strategic Plan and implementing new ideas. Karing for Kids was the state wide project with over \$8000 in toys, games, movies and car seats donated. Membership was the main focus with MLR (Members Learning to Recruit) packets distributed to all chapters. The future directions committee adopted a Position Statement in regards to the promotion of 7 members under 40 as a chapter base. Year-end growth was achieved in 2002. In 2003 over 2500 pounds in supplies were collected and donated to our troops in Iraq. In 2006, Operation Minnesota Nice resulted in \$43,000 of materials and cash donations to troops overseas. State dues increased to \$40 in 2007. Phase one of the new programming model introduced Women's Wellness and Records and Recognition. In 2008 membership voted to change to a trimester system. The

final phase of the programming restructure was completed with the addition of Living and Learning, Community Connections and Youth of Today. There are now 9 programming areas. The Jacob Wetterling Foundation was accepted as a 3-year priority project

One faces the future with where they have been. As Women of Today we are dedicated, faithful, creative, and persevering and ready for our next 60 years!

Maple Grove Women  
of Today Newsletter  
Editor: Bonnie Marten

Submit articles to  
Bonnie at  
[bmarten@embarqmail.com](mailto:bmarten@embarqmail.com)