

Fall State 2008
Holiday Inn, St. Cloud, MN
November 21-23, 2008
 Hosted by the St. Cloud Women of Today

Holiday Inn Hotel & Suites, St. Cloud's west side near several shopping centers; Easy access from I94 and Hwy 15; complimentary shuttle service to/from restaurants, shopping, and St. Cloud airport.

Meals:

Saturday Lunch: Deli Counter on Kaiser Roll with Wild Rice Soup or Tossed Salad, pickle, potato chips, coffee and milk.

Saturday Banquet: Roasted Turkey, Mashed Potatoes, Dressing, Gravy, Pumpkin Pie, Coffee and Milk

Sunday Brunch: Healthy Buffet: Juice, Scrambled Eggs, Fresh Fruit, Assorted Cold Cereal, Assorted Muffins, coffee, milk and juice

Room Reservations:

Contact the Holiday Inn, 1-888-890-0242 or 1-320-253-9000. **Mention Women of Today.**

- * One Queen Away from Pool \$89.95 + tax
- * Two Double Beds Away from Pool \$94.95+tax
- * Two Double Beds Poolside \$109.95 + tax
- * Atrium Suite(two queen beds & pull out) \$159.95 + tax

Room block ends October 15

Registrations:

Advanced registration must be postmarked by November 5th, 2008. Registration refunds must be requested before November 14th. A \$5 cancellation fee will apply.

Name: _____
 Address: _____
 Email: _____ Phone: _____
 Chapter: _____ District: _____ Area: _____
 Member: _____ First Timer: _____ Guest: _____

Advanced Registration

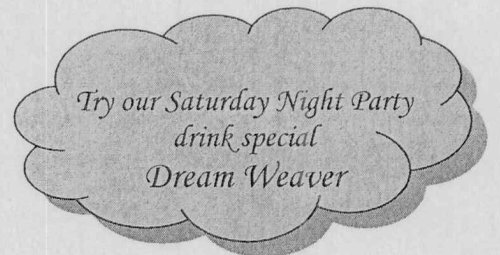
Late Registration

___ Full	\$ 69	___ Full	\$ 84
___ Business Meeting	\$ 7	___ Business Meeting	\$ 10
___ Luncheon	\$ 22	___ Luncheon	\$ 25
___ Banquet	\$ 32	___ Banquet	\$ 35
___ Saturday Night Party	\$ 12	___ Saturday Night Party	\$ 14
___ Sunday Brunch	\$ 16	___ Sunday Brunch	\$ 18

Etiquette Class

Have you ever wondered which fork to use or which cup is yours? Friday evening we will be providing an etiquette class in conjunction with a lasagna supper. This is not part of the standard registration fee. A fee is being charged to attend in order to cover the meal costs. Each person in attendance will also receive a free gift.

___ Etiquette Class \$18



Make checks payable to Fall State 2008 and mail to: Terri Cronin, P.O. Box 7836, St. Cloud, MN 56302
 General Information: Janel Bitzan 320-229-2774 or Terri Cronin 320-252-9754
 Email: jbitzan@charter.net or t_cronin@live.com